

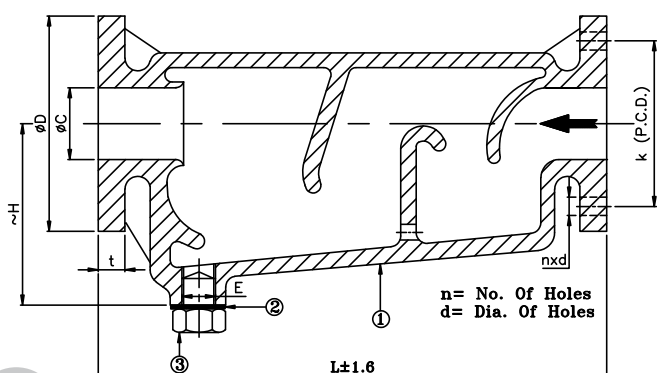


CAST IRON MOISTURE SEPARATOR PN-10

SPECIFICATIONS:

BAFFLE TYPE, FLANGED ENDS

FLANGES AS PER BS 4504 PN-10



ITEM	SIZES	ITEM CODE	END DETAILS
CAST IRON MOISTURE SEPARATOR PN-10	25mm TO 100mm	CI-036	FLANGE AS PER BS 4504, PN 10

STANDARD MATERIAL COMBINATION

	NAME OF PART	No. Off	MATERIAL	SPECIFICATION
1	BODY	1	C.I.	IS 210 FG260
2	GAGSKET	1	C.N.A.F.	BS 1832
3	PLUG	1	G.M.	BSEN 1982 CC49 1K

DIMENSION DATA

NOMINAL SIZE	25MM	40MM	50MM	65MM	80MM	100MM
L	275	370	466	485	485	692
~H	78	113	146	172	175	238
C	25	38	50	65	76	100
E	1/2" B.S.P.	1/2" B.S.P.	1/2" B.S.P.	1/2" B.S.P.	1" B.S.P.	1" B.S.P.
D	115	150	165	185	200	220
T	16	18	20	20	22	24
K	85	110	125	145	160	180
N	4	4	4	4	8	8
d	14	19	19	19	19	19

ITEM	SIZES	TEST PRESSURES	TESTING STANDARD
		BODY	
CAST IRON MOISTURE SEPARATOR PN-10	25mm to 100mm	22 Bar (HYD)	Manufacturer

NOTE: 1.The above data is subject to change without notice due to our continual product improvement program.
2.Valves Can be supplied in other MOC's on request, Cast Iron (IS 210 Gr. FG 260) Ductile Iron (ASTMA 395 Gr. 60-40-18 / 65-45-15 / GGG 40.30) & D2 (ASTMA 439 Gr. D2/ D2A/ D2B/ D2C)