

**BRONZE**

**GLOBE**

# STEAM STOP VALVE

## EVERLASTING & PERFECT

### DESCRIPTION :

'WJ' Bronze Globe Steam Stop Valve, screwed bonnet, inside screw, rising stem, with back seat having renewable stainless steel seat and stem, screwed female ends BSP Taper or Flanged ends to BS-10 Table 'H', hand wheel operated suitable for saturated steam lines upto 250 PSIG (17.58 Kg/Cm<sup>2</sup>g) and Max. Temp. of 428°F (220°C) tested to 500 PSIG (35.15 Kg/Cm<sup>2</sup>g) hydraulic pressure.

### SALIENT FEATURES :

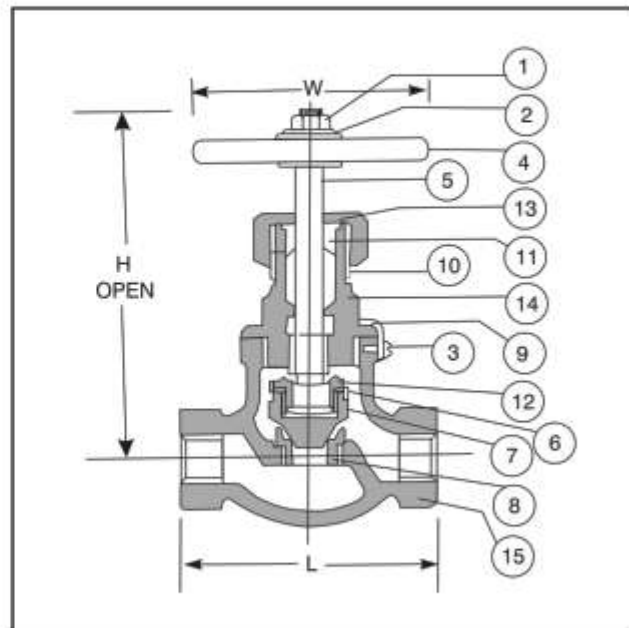
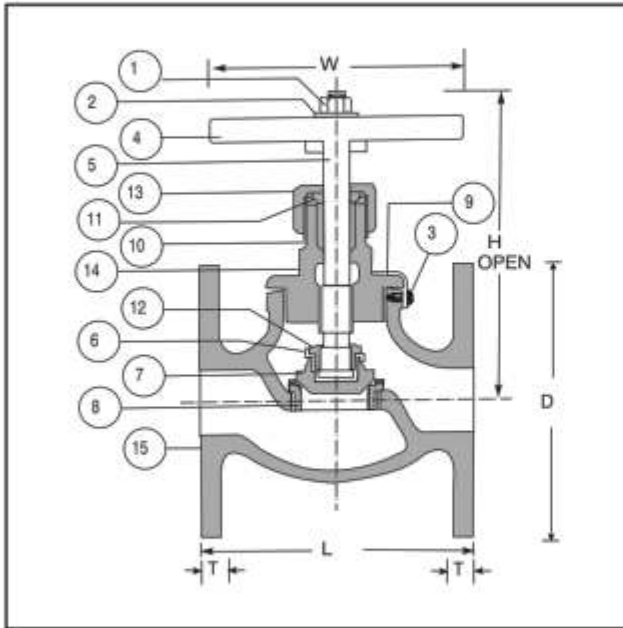
'WJ' Bronze Globe Steam Stop Valves are provided with following features to give trouble free service.

1. Back seat arrangement is provided to facilitate on line replacement of gland packing under pressure when valve is fully open.
2. Bonnet is locked for safety of operating staff.
3. Valve disc and check nut are locked by a S.S. (AISI 304) locking washer.
4. Body seat ring and disc are properly heat treated with at least 50 BHN difference.
5. Heavy and sturdy hand wheel with firm grip is provided.

### TESTING AND CERTIFICATION :

All valves are tested at double the max. working pressure. Each valve is supplied with IBR Test Certificate in Form III-C issued by The Director of Boilers, Punjab.





**DIMENSIONS**

Nominal Size DN	END TO END OR FACE TO FACE DISTANCE				CENTER TO TOP OPEN (Approx.)	HANDWHEEL DIAMETER
	SCREWED L	FLANGED L	D	T	H	W
15 mm (½")	83	106	114.3	9.5	120	70
20 mm (¾")	95	112	114.3	9.5	120	75
25 mm (1")	111	124	120.7	11.2	133	90
32 mm (1¼")	133.5	137.5	133.4	11.2	165	90
40 mm (1½")	148	149.5	139.7	12.7	178	105
50 mm (2")	178	177.5	165.1	12.7	215	140

**MATERIALS**

PART No.	NAME OF PART	MATERIAL	SPECIFICATION
1.	Nut for Handwheel	M.S.	-----
2.	Washer	M.S.	-----
3.	Screw	Brass	-----
4.	Hand Wheel	Cast Iron	IS : 210, FG-200
5.	Stem	S.S.	AISI-410
6.	Locking Washer	S.S.	AISI-304
7.	Disc	S.S.	AISI-410
8.	Body Seat Ring	S.S.	AISI-410
9.	Locking Device	Brass Sheet	-----
10.	Packing	Graphited Asbestos	-----
11.	Gland	Extruded Brass Rod	-----
12.	Check Nut	Bronze	IBR 282 (a) IV Gr. B.
13.	Gland Nut	Bronze	IBR 282 (a) IV Gr. B.
14.	Bonnet	Bronze	IBR 282 (a) IV Gr. B.
15.	Body	Bronze	IBR 282 (a) IV Gr. B.