

CAST IRON

MOISTURE SEPARATOR



STOUD & STURDY WORKING

DESCRIPTION :

'WJ' Cast Iron Moisture Separators are manufactured, with flanged ends to BS-10 Table 'H'. These are suitable for maximum working pressure of (13 Kg/Cm²g) on steam lines.

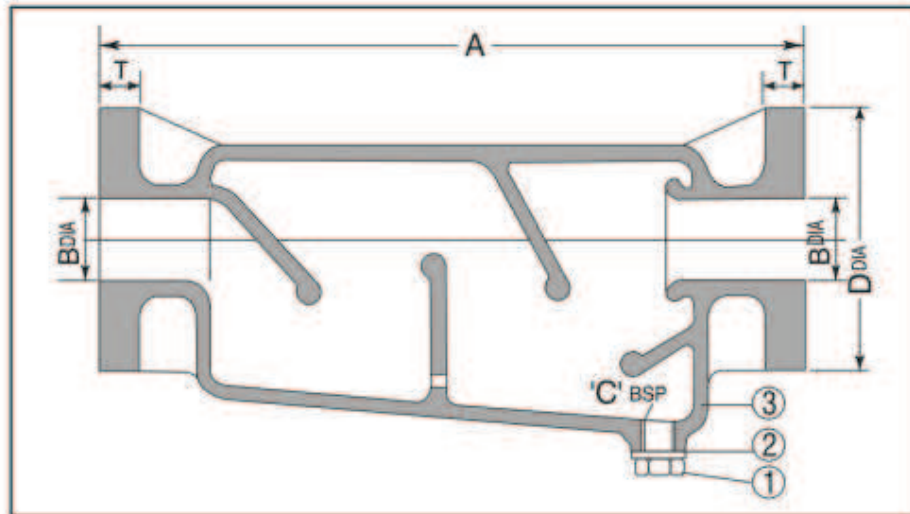
SALIENT FEATURES :

Moisture Separators are provided with internal ribs which help to remove the condensate from the steam lines.

TERMS & CONDITIONS :

All the Moisture Separators are tested at 26 Kg/Cm² Hydraulic Pressure. Each Moisture Separator is supplied with IBR Test Certificate in Form III-C, issued by The Director of Boilers, Punjab.





DIMENSIONS					
NOMINAL SIZE	A	B	C	DØ	T
25 mm (1")	300	25	½" BSP	121	19.1
40 mm (1½")	370	40	½" BSP	140	22.2
50 mm (2")	466	50	½" BSP	165.1	25.4
65 mm (2½")	485	63	1" BSP	184.2	28.6
80 mm (3")	485	76	1" BSP	203.2	28.6
100 mm (4")	696	100	1" BSP	228.6	32

MATERIALS			
PART No.	NAME OF PART	MATERIAL	SPECIFICATION
1.	Drain Plug	Bronze	IBR 282 (a) (IV) Gr. B
2.	Gasket	Steam Jointing	---
3.	Body	C.I.	IBR 86 to 93 Gr. A