

Manual Balancing Valve

SKS 130

PRODUCT DATA

FEATURES

- Wide Size range (DN50...DN300)
- Operated by Hand Wheel
- Cast iron Body
- S.S Disc

SPECIFICATIONS

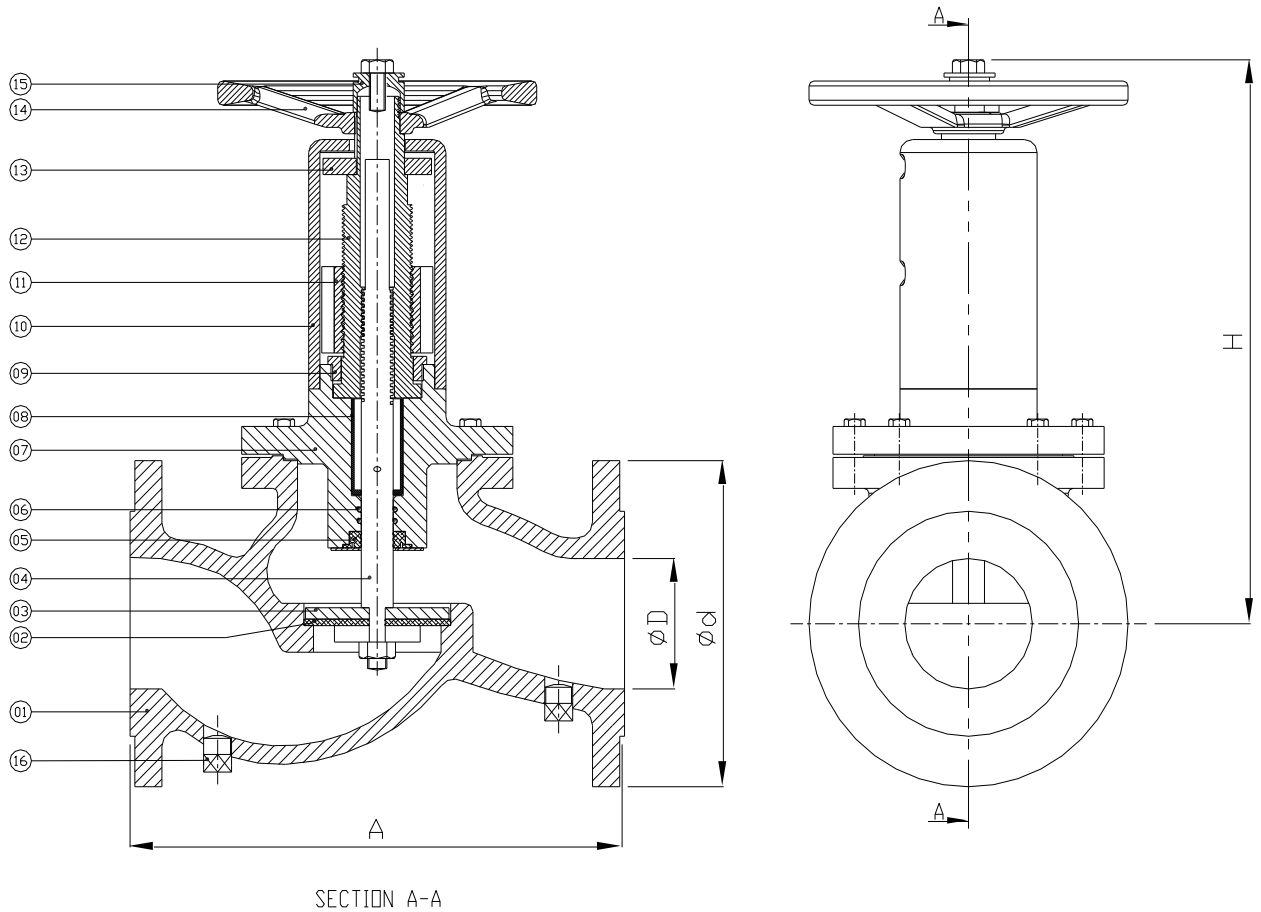
Sizes	DN50...DN300
Nominal pressure	PN16
Medium Temperature	-10°C ~ +110°C Maximum
Body Material	IS:210, FG 220 CI
Stem Material	ASTM A276,GR SS 410
Disc Material	Stainless steel Disc
Hand Wheel	Cast Iron
Leakage Rate	No visible leakage
Medium Type	Water
Shell Test pressure	24bar
Seal Test pressure	17bar



GENERAL

The Balancing Valves is designed for double regulating, control and shut off valve with built-in pressure drop measuring facility.

DIMENSIONS (mm)



Part Descriptions

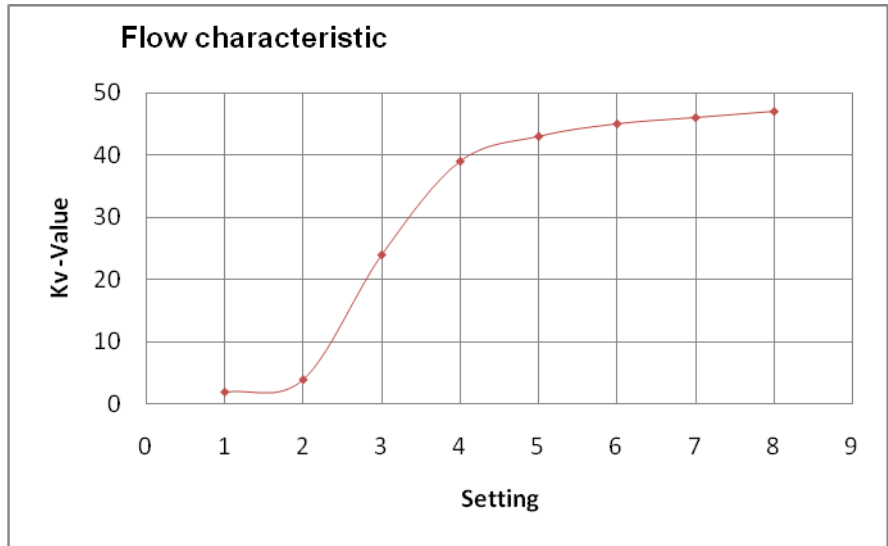
PT No.	01	02	03	04	05	06	07	08	09	10	11	12	13	14	15	16
Parts	Body	Seat	Disc	Stem	Seal	O-Ring	Bonnet	Guide	Check Nut	Cover	Scale-1	Balancing Nut	Scale-2	Hand Wheel	Nut	Plug
Material	Cast Iron	EPDM	S S	SS410	EPDM	EPDM	Cast Iron	Nylon / M.S	Brass	C.I./ D.I	M.S	S S410	Cast Iron	Cast Iron	M.S	M.S

Outside Dimension (mm)

SIZE	50	65	80	100	125	150	200	250	300
A	230	290	310	350	400	480	600	730	850
H	218	223	355	275	290	370	415	535	565
ΦD	50	65	80	100	125	150	200	250	300
Φd	165	185	200	220	250	285	340	405	460
PCD	125	145	160	180	210	240	295	355	410
No. of Holes	4	4	8	8	8	8	12	12	12
Hole dia.	19	19	19	19	19	23	23	28	28
WHEEL Dia.	200	200	200	200	300	300	300	300	300

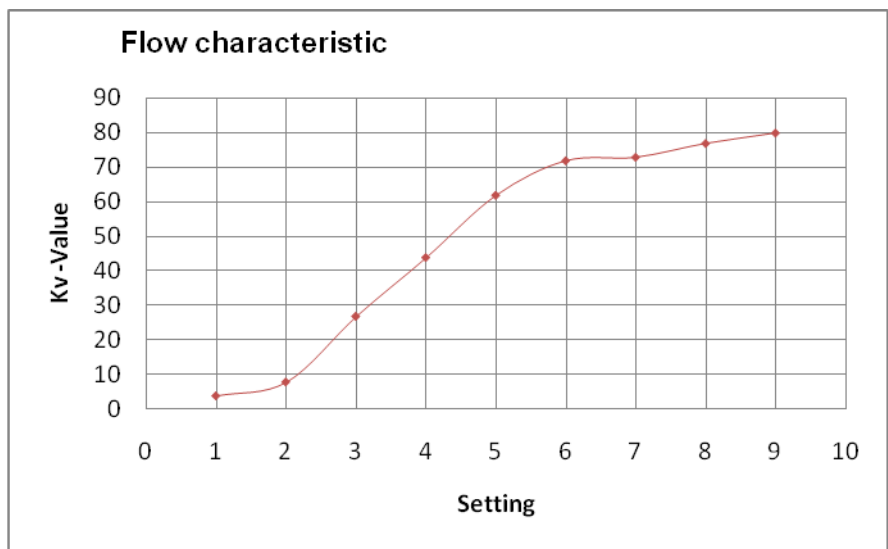
Balancing Valve DN50/PN16

Setting	Kv-value (m ³ /h)
1	2
2	4
3	24
4	39
5	43
6	45
7	46
8	47



Balancing Valve DN65/PN16

Setting	Kv-value (m ³ /h)
1	4
2	8
3	27
4	44
5	62
6	72
7	73
8	77
9	80



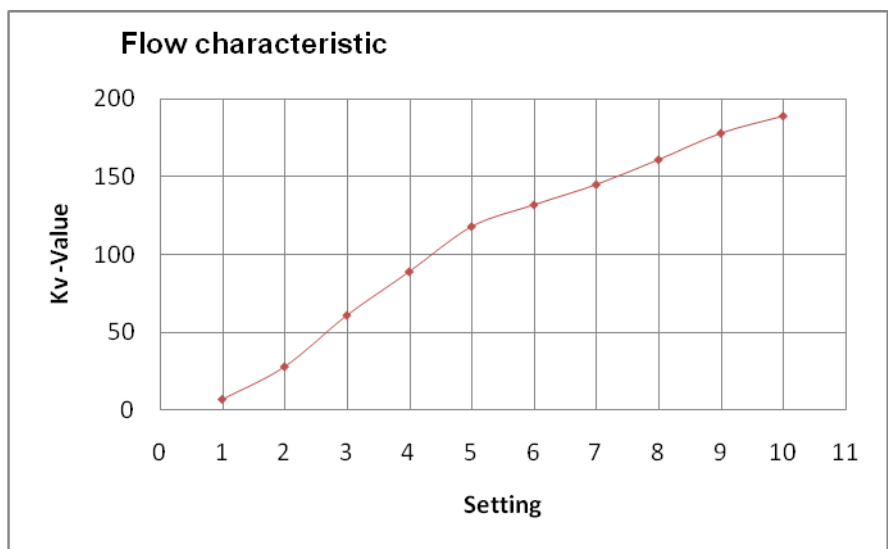
Balancing Valve DN80/PN16

Setting	Kv-value (m ³ /h)
1	3
2	9
3	33
4	61
5	74
6	85
7	95
8	105
9	107



Balancing Valve DN100/PN16

Setting	Kv-value (m ³ /h)
1	6
2	20
3	55
4	70
5	105
6	132
7	145
8	161
9	178
10	190



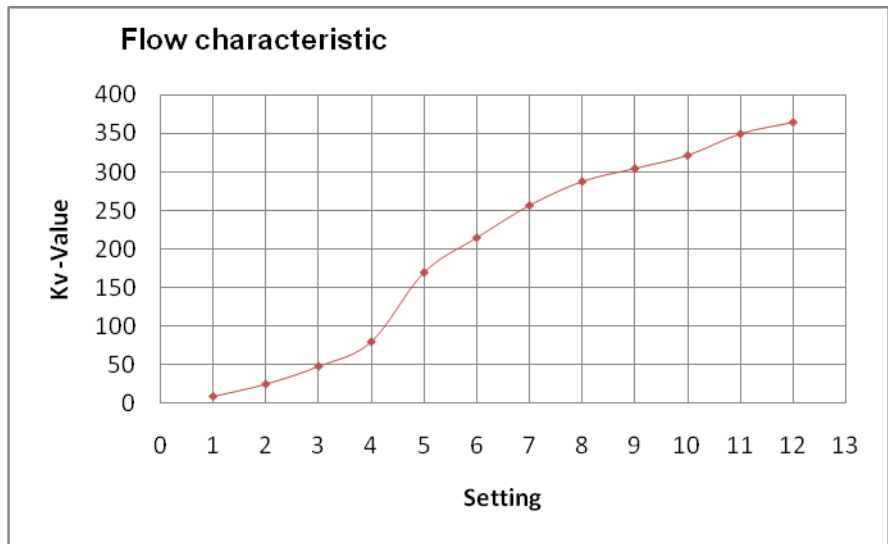
Balancing Valve DN125/PN16

Setting	Kv-value (m³/h)
1	5
2	25
3	62
4	86
5	128
6	177
7	201
8	216
9	238
10	255
11	270
12	290



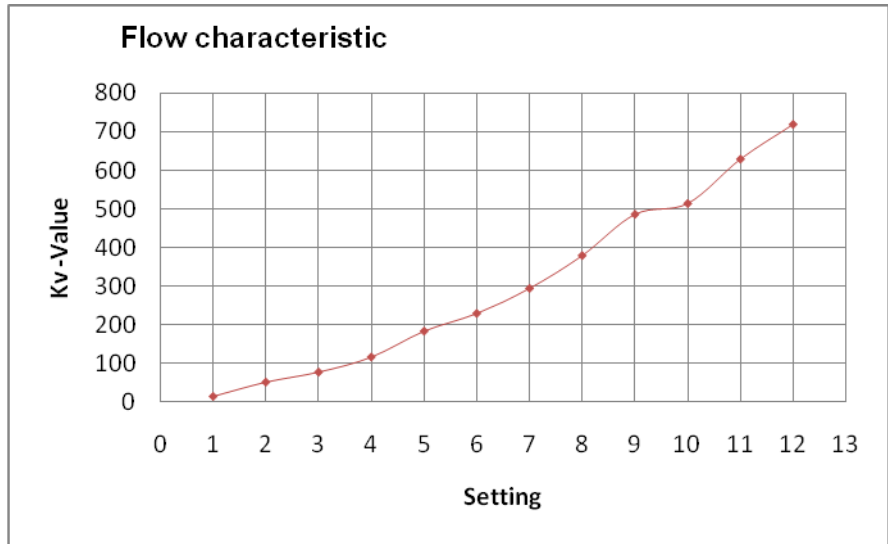
Balancing Valve DN150/PN16

Setting	Kv-value (m³/h)
1	9
2	25
3	48
4	80
5	170
6	215
7	257
8	288
9	305
10	322
11	350
12	365



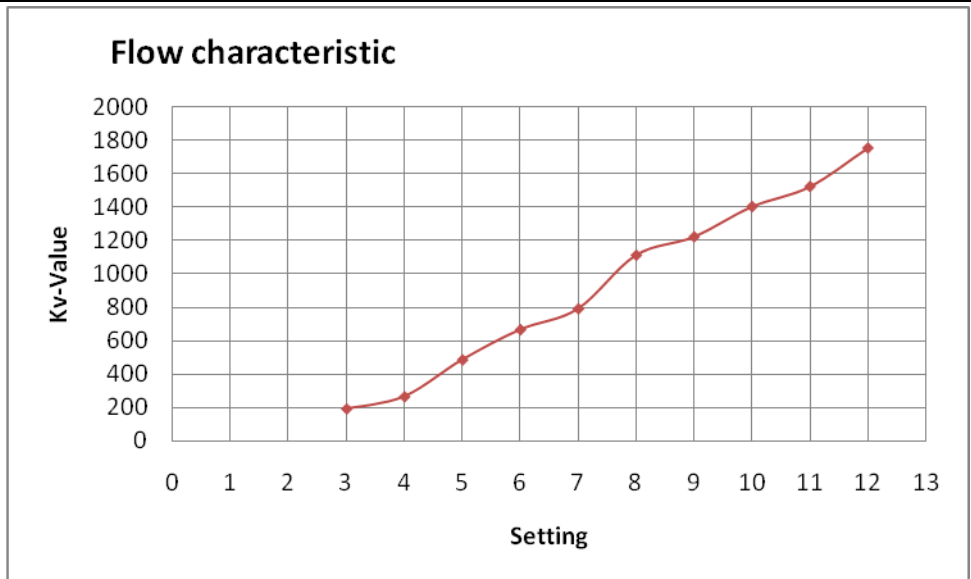
Balancing Valve DN200/PN16

Setting	Kv-value (m ³ /h)
1	15
2	52
3	78
4	117
5	184
6	230
7	295
8	380
9	487
10	515
11	630
12	720



Balancing Valve DN250/PN16

Setting	Kv-value (m ³ /h)
3	192
4	265
5	485
6	665
7	790
8	1110
9	1220
10	1400
11	1520
12	1750



Balancing Valve DN300/PN16

Setting	Kv-value (m ³ /h)
3	215
4	502
5	705
6	923
7	1232
8	1438
9	1612
10	1811
11	1905
12	2100

