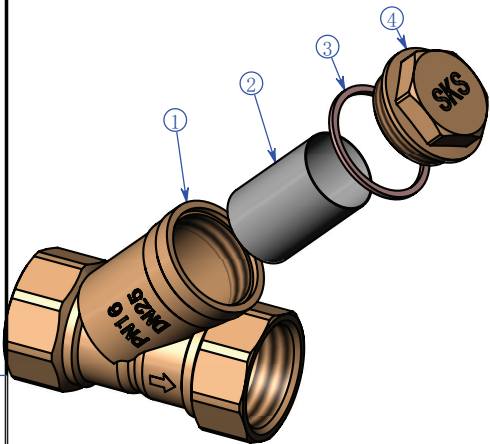
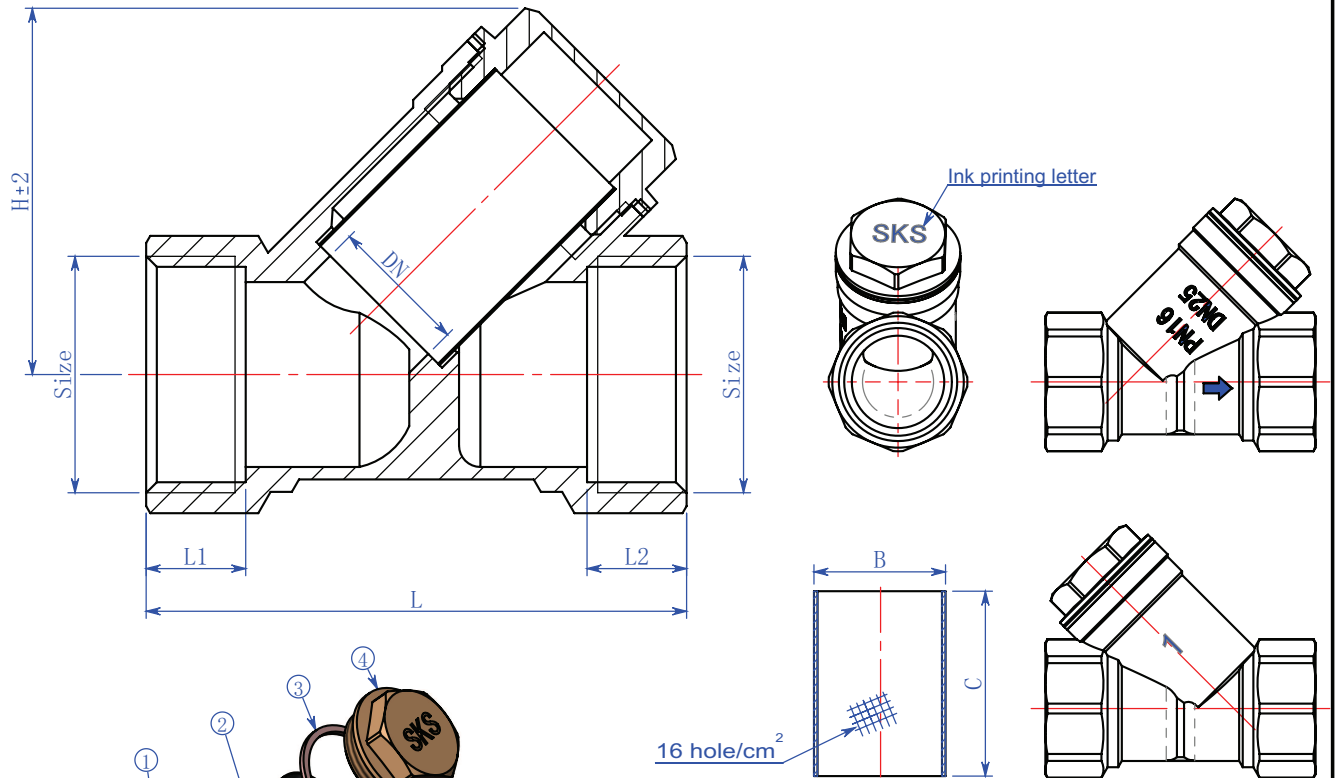


Size	DN	L	L1	L2	H	B	C	Weight (g)
G 3/8	Ø11	46	11.5	10	30	Ø18	29	95
G 1/2	Ø15	56.5	11.5	11	38.5	Ø18	29	140
G 3/4	Ø19	69	13	11	47.5	Ø24	35	205
G 1	Ø20.5	77	16.5	16.5	50	Ø24	35	300
G 1 1/4	Ø29.5	96.5	18	18	65	Ø35	52	580
G 1 1/2	Ø34	105	18.5	18.5	73.5	Ø42	58.5	800
G 2	Ø44	126	21	21	90	Ø53	69	1350
G 2 1/2	Ø54	133	18	18	106.5	Ø63	85	1950
G 3	Ø62	156.5	21	21	121.5	Ø74	98	2950
G 4	Ø87	180	25	25	148.5	Ø94	113	4800



Specification:
 1. Working Pressure: 1.6 MPa;
 2. Working temperature: -10°C ~ 80°C;
 3. Surface: Nickel-plated.

No.	Name	Material	QTY.
1	Body	3/8"-2 1/2" Brass (Cu > 57%, Pb < 3%, Fe < 0.8%) 3"-4" Brass (Cu > 57%, Pb < 3%, Fe < 1%)	1
2	Filter	Stainless steel	1
3	Washer	Klingerit	1
4	Bonnet	Brass (Cu > 57%, Pb < 3%, Fe < 0.8%)	1

TOLERANCE OF DIMENSIONS AND GEOMETRY UNLESS OTHERWISE SPECIFIED

DIMENSION	GB/T1804-m	ANGLE	PLUMB	CONCENTRICITY
≤6	±0.1	±1°	±0.1	Ø0.3
> 6 ≤ 30	±0.2			
> 30 ≤ 120	±0.3			
> 120 ≤ 400	±0.5			
DESIGN	Radman	2013.07.31		
CHECKED	XGW	2013.07.31		
PROCESSOR	LWF	2013.07.31		
STANDARDIZATION	YSY	2013.07.31		
APPROVED	YSY	2013.07.31		

PRODUCT TYPE :

3500

TITLE :
**Y strainer
 Assembly drawing
 3/8 " - 4 "**

ART.

SKS.574

DWG.NO.

2350003

EDITION
A

PROJECTION MEANS	PRIMO ANGLE OF VIEW	DRAWING UNIT	mm
DESIGN SIGN	G.W	N.W.	SCALE
S	A	B	1:1

PAGE OF



Email: info@pipelineproductsindia.com
 Website: www.pipelineproductsindia.com

EDITION

Customer drawing number